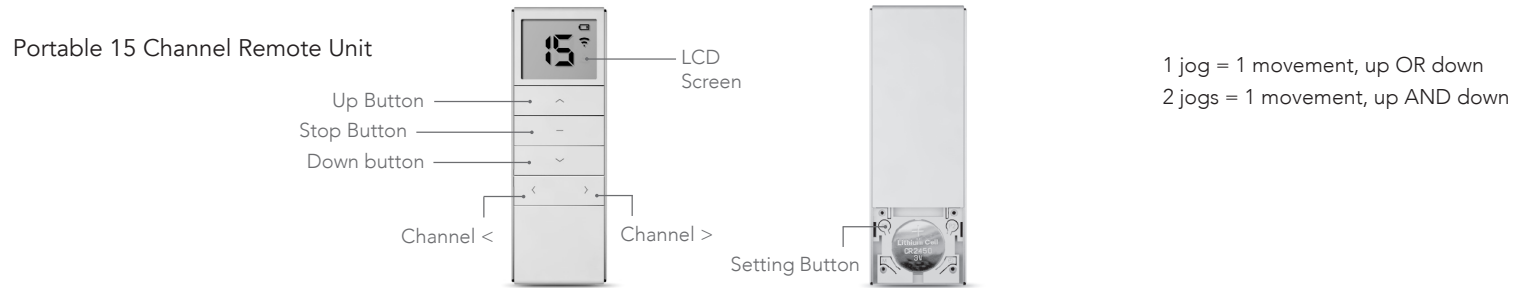


R1725 Motor Instructions

for use with R1730 Remote Control



Step 1 - Pairing the handset with the motor

Note: During the setting procedure, the time between two operations must not exceed 4 seconds as this will cause the setting up process to quit.

- Switch on the power to the motor.
- Remove the battery cover on the reverse of the remote. There are two setting buttons (P2) on either side of the battery, press either one.
- Select a channel from 1 - 15 on the remote by pressing channel up or down (< or >).
- Press the button on the motor and the motor will jog up and down.
- Press P2 twice then the up or down button once. The motor will jog twice each time.
- To change direction press and hold the button on the motor for 4 jogs.

The motor and remote are now paired.

Step 2 - Setting the limits

Select the same channel and set the top limit.

- Press P2, then the up button followed by P2 again, the motor will jog twice and beep.
- Press the up button and the blind will start to rise.
- Press P2 and the blind will go into slow jog mode.
- Press the stop button on the remote and the blind will stop.
- Hold the stop button down until the motor jogs twice, this will set the top limit.
- Press the down button and the blind will start to go down.
- Press P2 and the blind will go into slow jog mode.
- Press the stop button on the remote and the blind will stop.
- Press and hold the stop button down until the motor jogs twice, this will set the lower limit.

Setting is complete. For more blinds, select another channel on the remote and repeat from step 2.

Step 3 - Setting a third position

- Move the blind using the up and down buttons on the remote to the desired position press stop.
- Then P2 followed by the stop button twice more, this will cause the motor to jog twice.
- To operate the third position, press and hold the stop button and the blind will move to its third position.
- To delete the third position, press P2, followed by the stop button twice, the motor will jog twice.

Deleting a limit

- To delete a limit, press P2 followed by the down button then press P2 again, the motor will jog twice.

Deleting a handset

- To delete a handset, press P2 then the stop button followed by P2 again, the motor will jog twice.

Adding a handset

- To add a handset, press P2 twice on the existing handset. Then press P2 on the new handset, the motor will jog twice.

To perform a factory reset press and hold the button on the motor for 6 jogs.

Technical specification

Input voltage: 3V (CR2450)
Transmitting frequency: 433MHz
Transmitting power: 10 milliwatt
Operating temperature: -10°C to 50°C
Transmission distance: 200 metres open office, 35 metres on two walls

CAUTION

RISK OF EXPLOSION IF BATTERY IS REPLACED BY AN INCORRECT TYPE. DISPOSE OF USED BATTERIES ACCORDING TO THE INSTRUCTIONS.

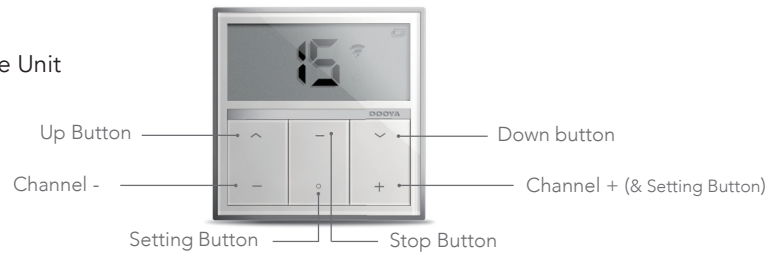
Notice:

Do not expose the unit to moisture or heat. When you use the control unit, if emission distance is short and less effective, please replace battery. Please recycle batteries.

R1725 Motor Instructions

for use with R1735 Remote Control

Portable 15 Channel Remote Unit



1 jog = 1 movement, up OR down
2 jogs = 1 movement, up AND down

Step 1 - Pairing the handset with the motor

Note: During the setting procedure, the time between two operations must not exceed 4 seconds as this will cause the setting up process to quit.

- Switch on the power to the motor.
- Always press O and + together.
- Select a channel from 1 - 15 on the handset by pressing + or -.
- Press the button on the motor and the motor will jog up and down and beep.
- On the remote, press O and + together twice then the up or down button once. The motor will jog twice each time and beep.
- To change direction press and hold the button on the motor for 4 jogs.

The motor and remote are now paired.

Step 2 - Setting the limits

Select the same channel and set the the top limit.

- Press O and + together, then the up button followed by O and + together again, the motor will jog twice and beep.
- Press the up button and the blind will start to rise.
- Press O and + together and the blind will go into slow jog mode.
- Press the stop button on the remote and the blind will stop.
- Press and hold the stop button down until the motor jogs twice and beeps, this will set the top limit.
- Press the down button and the blind will start to go down.
- Press O and + together and the blind will go into slow jog mode.
- Press the stop button on the remote and the blind will stop.
- Press and hold the stop button down until the motor jogs twice and beeps, this will set the lower limit.

Setting is complete. For more blinds, select another channel on the remote and repeat step 2.

Step 3 - Setting a third position

- Move the blind using the up and down buttons the remote to the desired position press stop.
- Then O and + together followed by the stop button twice more, this will cause the motor to jog twice and beep.
- To operate the third position, press and hold the stop button and the blind will move to its third position.
- To delete the third position, press O and + together, followed by the stop button twice, the motor will jog twice.

Deleting a limit

- To delete a limit, press O and + together followed by the down button then press O and + together again, the motor will jog twice.

Deleting a handset

- To delete a handset, press O and + together then the stop button followed by O and + together again, the motor will jog twice and beep.

Adding a handset

- To add a handset, press O and + together twice on the existing handset. Then press O and + together on the new handset, the motor will jog twice.

To perform a factory reset press and hold the button on the motor for 6 jogs.

Technical specification

Input voltage: 3V (CR2430) x1
Transmitting frequency: 433MHz
Transmitting power: 10 milliwatt
Operating temperature: -10°C to 50°C
Transmission distance: 200 metres open office, 35 metres on two walls

Notice:

Do not expose the unit to moisture or heat. When you use the control unit, if operation distance becomes short and less effective then please replace batteries. Please recycle old batteries.