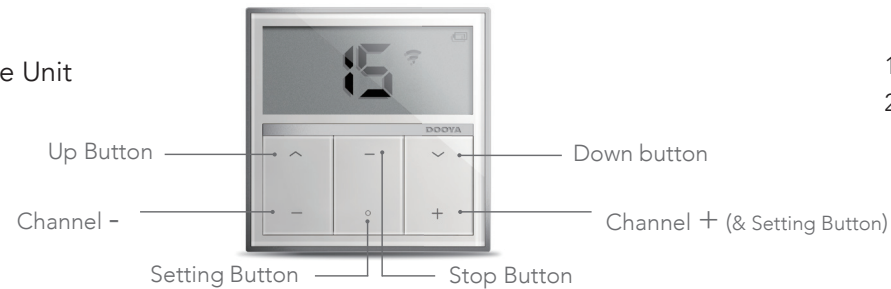


R1735 Remote Control Instructions

Portable 15 Channel Remote Unit



1 jog = 1 movement, up OR down
2 jogs = 1 movement, up AND down

Step 1 - Pairing the handset with the motor

Note: During the setting procedure, the time between two operations must not exceed 4 seconds as this will cause the setting up process to quit.

- Switch on the power to the motor.
- Always press O and + together.
- Select a channel from 1 - 15 on the handset by pressing + or -.
- Press the button on the motor and the motor will jog up and down and beep.
- On the remote, press O and + together twice then the up or down button once. The motor will jog twice each time and beep.
- To change direction press and hold the button on the motor for 4 jogs.

The motor and remote are now paired.

Altering the amount of channels to less than 15

- Press and hold both channel selection buttons at the same time until a C appears on the screen followed by the number 15.
- Select the number of channels required by pressing the channel selection buttons.
- Press and hold the stop button until a zero appears followed by the selected number of channels, then release.

Technical specification

Input voltage: 3V (CR2450)
Transmitting frequency: 433MHz
Transmitting power: 10 milliwatt
Operating temperature: -10°C to 50°C
Transmission distance: 200 metres open office, 35 metres on two walls

CAUTION
RISK OF EXPLOSION IF BATTERY IS REPLACED BY AN INCORRECT TYPE. DISPOSE OF USED BATTERIES ACCORDING TO THE INSTRUCTIONS.

Notice:
Do not expose the unit to moisture or heat. When you use the control unit, if emission distance is short and less effective, please replace battery. Please recycle batteries.